

copy licence No. 100048453
 scale 1:20, 1:100 & 1:10 @ a3

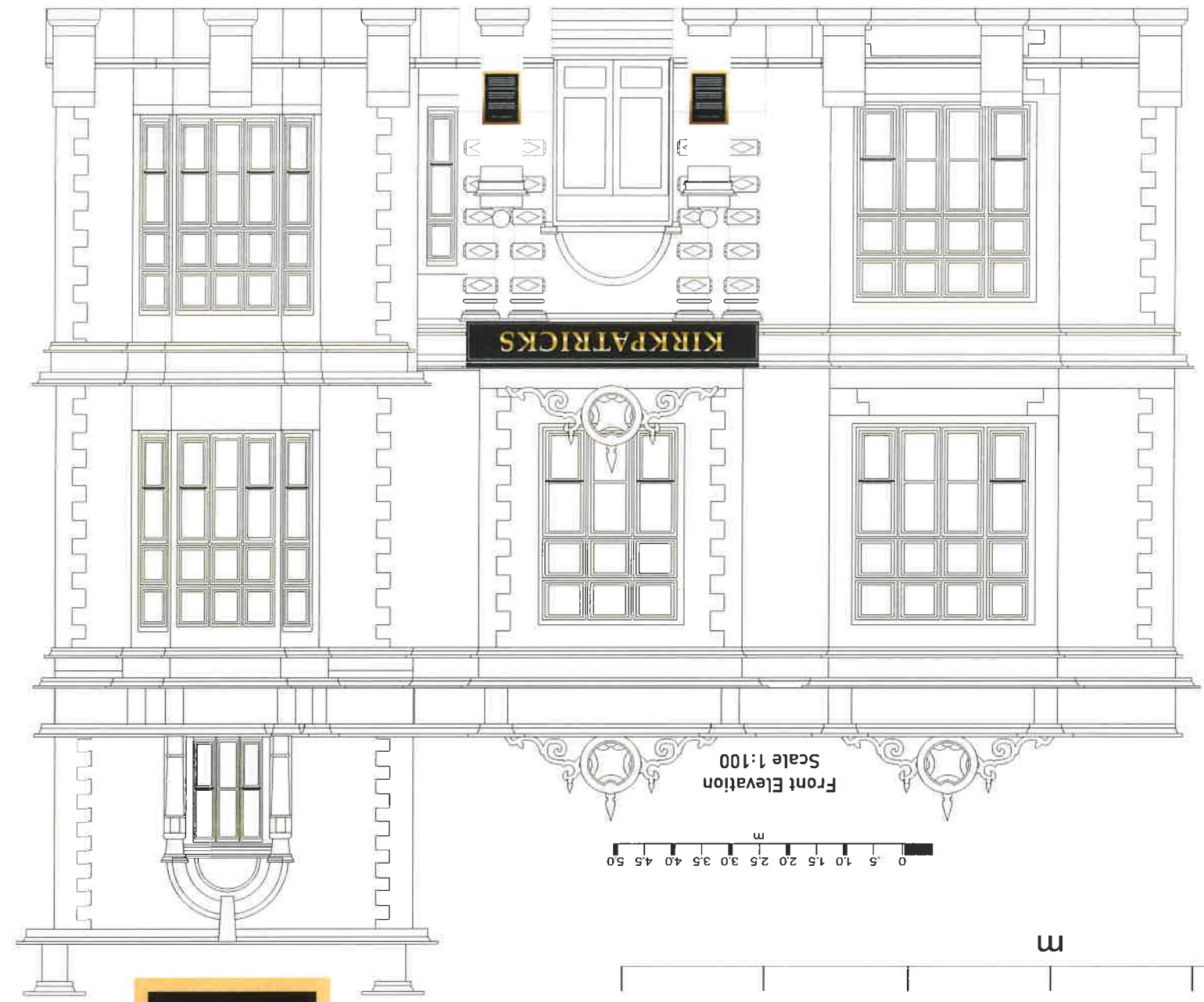


NB Please always refer to actual paint references for accurate colour representations

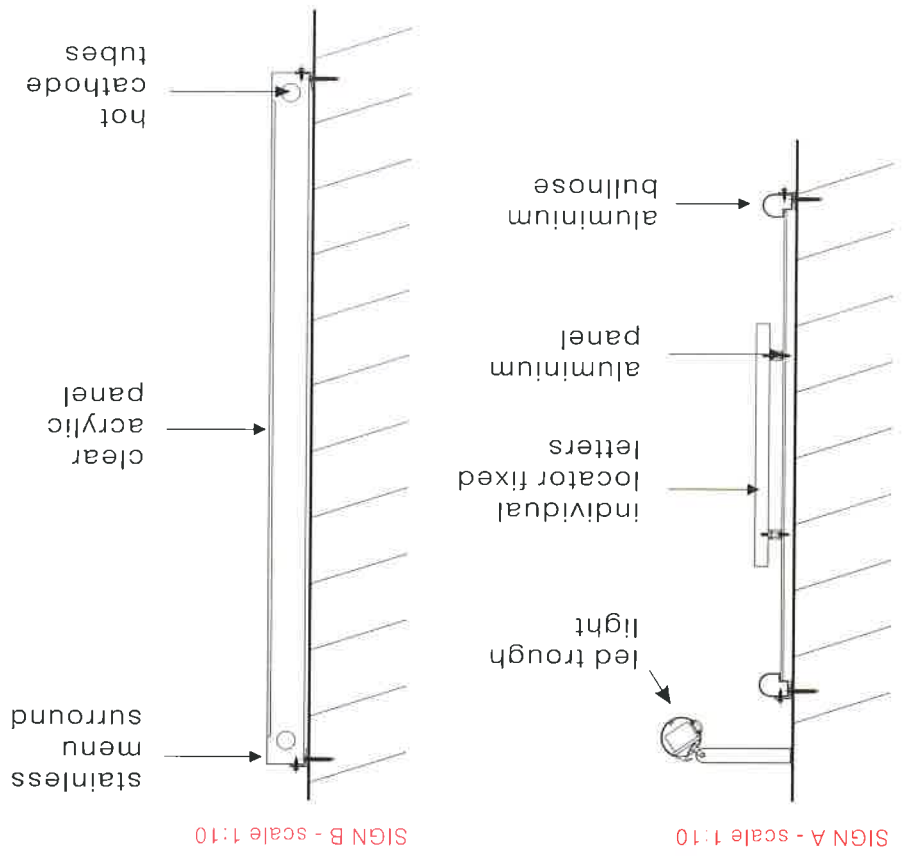
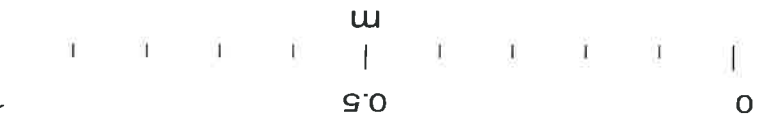
B - Scale 1:20



A - Scale 1:20



Sign A - One aluminium bullnose fascia sign complete with set of individual locator fixed letters, illuminated by led trough light. 5100 x 65mm, K-330mm.
 Sign B - Two Brass menu units to entrance pillars. 380 x 940mm.



W0001626
 STONEGATE
 KIRKPATRICKS
 SOUTH SHIELDS
 23 02 15 dr
 REV B 13 03 15 dr
 Insignia
 insigniasigns.biz
 0113 243 8533
 frank@insigniasigns.biz
 amanda@insigniasigns.biz